



## Change is Good...

Included in this newsletter is the 2012 PA SFI® Spring Training Schedule. The Implementation and Training Committees have made important changes to the Core Training Requirements in 2012 to better meet the needs of timber harvesters and improve safety. A complete copy of the training program policy and most current training schedule can be found at [www.sfiopa.org](http://www.sfiopa.org) or by contacting the PA SFI® office.

### New PA SFI® Core Training Requirement (Effective 1/1/2012):

- 1) **Professional Timber Harvesting Essentials** (8 hours) - combines the information previously provided in the Environmental Logging (EL) and the Logging Safety (LS) classes into a one-day, indoor program with more up-to-date material. There is less emphasis on “how to write” an Erosion & Sedimentation (E&S) Control Plan and more information on “what’s in” an E&S plan, including new DEP requirements and Best Management Practices related to water quality. An 8-hour, indoor/outdoor, continuing education course on writing an E&S plan is being developed.
- 2) **Game of Logging (GOL)—Level 1** (8 hours) - Too many accidents related to chain saw use and tree felling continue to plague our industry. GOL is an internationally recognized chain saw safety program that teaches the latest and safest techniques in saw operation and tree felling/processing.
- 3) **Basic First Aid & Adult CPR**—Proof of current certification that meets OSHA Logging standards is necessary to receive a PA SFI® Training Card.

### Key points to remember as we transition to the new Core requirements:

- ⇒ If you started your PA SFI® training within the last 2-years by completing either EL or LS, you will only be required to attend the Essentials class within the two-year period and provide proof of FA/CPR certification to receive your training card. You will not have to take GOL-Level 1.
- ⇒ If you have taken GOL-Level 1 any time in the past and can provide proof of attendance (GOL certificate), you will have satisfied that Core requirement.
- ⇒ FA/CPR can be taken locally through the Red Cross, EMS, or another organization. “On-line” certification courses do not meet OSHA Logging standards.

### Other key points for currently trained harvesters to remember:

- ⇒ If you have or have had a valid PA SFI® Training Card in the last 5 years, you can attend the Professional Timber Harvesting Essentials class for CE credit, and if you have not taken GOL-Level 1 within the last 5 years, you can also attend one of the GOL-Level 1 classes listed on the training schedule for CE credit.
- ⇒ FA/CPR recertification does not qualify for CE credit.
- ⇒ Continuing Education Credit is limited to 3 years from the current calendar year regardless of the number of training hours attended.
- ⇒ Continuing Education Credit is not available for the same program taken within the last five years.

Thank you to all our program contributors and course attendees. May 2012 be a safe and productive year.

Nate Fice, Program Manager

### Implementation Committee (SIC) Members

**John Bouch**, PA Veneers Inc.  
**Charlie Brown**, Chair, Glatfelter Pulp Wood\*  
**Dennis Brehm**, Weaber Lumber Inc.\*  
**Keith Craig**, PA HDC  
**Amy Doty**, SFI Inc.  
**Dan Evans**, Domtar Paper Co., LLC\*  
**Nate Fice**, PA SFI®  
**Jim Finley**, Penn State University  
**James Grace**, Penn State University  
**Bob Hobbes**, Hobbes Forestry  
**Dave Jackson**, Penn State Coop. Ext.  
**Chuck Dibble**, Craftmaster Manufacturing, Inc.  
**Jeff Kochel**, Forest Investment Associates\*  
**Rich LaBrozzi**, RAM Forest Products  
**Mike Lester**, PA Bureau of Forestry  
**John Levavasseur**, Hancock Forest Mgmt.\*  
**Paul Lyskava**, PA Forest Products Association  
**Nancy McCloskey**, Forecon, Inc.  
**Ken Roberts**, Vice Chair, NewPage Corp.\*  
**Ron Rohall**, PACD  
**Rudean Reynolds**, Weyerhaeuser\*  
**Todd Sparks**, Hancock Forest Management\*  
**Kevin Stout**, Allegheny Wood Products  
**Susan Stout**, USDA Forest Service  
**Sue Swanson**, AHUG  
**Barrett Wiggins**, Deer Park Lumber Co.  
**Jonathan Wirth**, Walker Lumber Co.

\* Denotes SFI® Program Participant

Questions or comments regarding the PA SFI® newsletter, contact:

Pennsylvania SFI® IC  
 914 W Lockhart Street  
 Sayre, PA 18840

570-731-4269 or 888-734-9366 (toll free)

[PASFI@sfiopa.org](mailto:PASFI@sfiopa.org) or [www.sfiopa.org](http://www.sfiopa.org)

**Sustainable Forestry Initiative  
(SFI®)**

SFI Inc. ([www.sfiprogram.org](http://www.sfiprogram.org)) is an independent 501(c)(3) non-profit charitable organization, and is solely responsible for maintaining, overseeing and improving the internationally recognized Sustainable Forestry Initiative (SFI) program. Across North America, more than 190 million acres/78 million hectares are certified to the SFI forest management standard, making it the largest single forest standard in the world. SFI chain-of-custody certification tells buyers the percentage of fiber from certified forests, certified sourcing and/or post-consumer recycled content. The SFI program's unique fiber sourcing requirements promote responsible forest management on all suppliers' lands. SFI Inc. is governed by a three-chamber board of directors representing environmental, social and economic sectors equally. In order to broaden the practice of sustainable forestry in our state, the PA SFI Implementation Committee was formed. Today, the PA SFI® program works to ensure the progress of the national initiative, here in Pennsylvania.

**SFI, Inc. Program Participants in PA**

*These PA Companies are affiliated with the SFI® Program at the national level through independent third-party certification and provide direct involvement and financial support to the PA SFI® Program.*

**Domtar Paper LLC**

**Forest Investment Associates**

**Glatfelter Pulp Wood Company**

**Hancock Forest Management**

**NewPage Corporation**

**Weaber, Inc.**

**Weyerhaeuser**

**Walnut Log Import Agreements Available**

The PA Department of Agriculture has developed a compliance agreement which will permit the movement of black walnut logs into Pennsylvania from states that have been found to contain Black Walnut Thousand Cankers Disease (These currently include Virginia and Tennessee, as well as AZ, CA, CO, ID, NV, OR, and WA). The logs must originate from an area outside these state's own internal TCD quarantine zone.

Pennsylvania currently has a ban on the importation of walnut logs from the above-mentioned states without approval from the PA Dept. of Agriculture.

PA mills and timber harvesters interested in obtaining this permit should contact Dana Rhodes, Bureau of Plant Industry, 717-772-5205 or [Plant@pa.gov](mailto:Plant@pa.gov).

**M.K. Goddard Forest Management & Sustainability Award**

Jay and Joan Livziey were recognized for their strong commitment to managing their forest lands for the long-term benefit of future generations. The Livzieys, of Williamsport, PA, were presented with the 2011 Maurice K. Goddard Forest Management & Sustainability Award at the Pennsylvania Forestry Association Annual Banquet held on September 17<sup>th</sup> in Mont Alto, PA.

Named after former PA DCNR Secretary, Maurice K. Goddard, the award is sponsored by the Pennsylvania Sustainable Forestry Initiative® (SFI®) Program and recognizes a PA forest landowner who demonstrates long-term sustainability of their forest resource through forest management planning, implementing sustainable forestry practices, and being a role model/educator for other forest stewards.

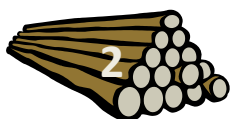
Jay, along with his wife Joan, own and manage 86 acres in Hartley Township, Union County. The parcel was purchased in 1956 by Jay's father and has been under Jay's care and ownership since the early 1990's. Over the years he has sought professional advice from many natural resource managers including Mark Holman, Consulting Forester, and PA Bureau of Forestry Service Foresters, Tom Strausbaugh (retired), John Portzline (former), and Gerald Hoy (current). His original Forest Stewardship Plan was completed in 1993 and was updated in 2005. These plans guided Jay to complete many activities on the property over the past 20 years. Some of his accomplishments are building 2.5 miles of forest access roads, timber stand improvement, invasive plant species control, and native tree planting. Wildlife habitat on the property has been improved through the construction of two vernal ponds, mast tree release, the construction/placement of bird/bat houses,

(Continued on Page 6)

**2012 Timber Harvester**

**Training Results**

- 97** Individuals Completed Core Training Requirements
- 653** Individuals Attended Training
- 1,010** Training Units Recorded (Course Attendees)
- 63** Training Programs Conducted/Awarded CE Credit
- 716** Individuals Hold Current PA SFI® Training Cards (As of 12/31/2011)





# Pennsylvania Sustainable Forestry Initiative® (SFI®)

## 2012 Training Schedule (As of 2/22/2012)

**To avoid course cancellations, pre-registration and payment for all classes is required by the registration deadline.**

**Core Training –** Individuals must complete *Professional Timber Harvesting Essentials*, *Game of Logging - Level 1*, and provide proof of current *First Aid/CPR* certification within a 2-year period to receive a PA SFI® Training Card. See the complete PA SFI® Training Program Policy at [www.sfiopa.org](http://www.sfiopa.org).

Course Date	Time	Course Name (Course Descriptions on Registration form)	Location	Cost <sup>2</sup>	Register By
3/28/12 Wed	8:00 a.m.	Professional Timber Harvesting Essentials (8 hours)	Smethport	\$85	March 21 <sup>st</sup>
3/29/12 Thurs	8:00 a.m.	Game of Logging – Level 1 (8 hours)	Pottsville	\$60 <sup>1</sup>	March 22 <sup>nd</sup>
4/3/12 Tues	9:00 a.m.	Basic First Aid and Adult CPR (4 hours)	Johnsontown	\$60	March 27 <sup>th</sup>
4/6/12 Fri	8:00 a.m.	Professional Timber Harvesting Essentials (8 hours)	Wellsboro	\$85	March 30 <sup>th</sup>
4/9/12 Mon	8:00 a.m.	Game of Logging – Level 1 (8 hours)	Warren	\$60 <sup>1</sup>	April 2 <sup>nd</sup>
4/10/12 Tues	9:00 a.m.	Basic First Aid and Adult CPR (4 hours)	Coudersport	\$60	April 3 <sup>rd</sup>
4/11/12 Wed	8:00 a.m.	Professional Timber Harvesting Essentials (8 hours)	Clarion	\$85	April 4 <sup>th</sup>
4/12/12 Thurs	4:00 p.m.	Basic First Aid and Adult CPR (4 hours)	Wellsboro	\$60	April 5 <sup>th</sup>
4/18/12 Wed	8:00 a.m.	Professional Timber Harvesting Essentials (8 hours)	Lancaster	\$85	April 11 <sup>th</sup>
4/25/12 Wed	8:00 a.m.	Professional Timber Harvesting Essentials (8 hours)	Dushore	\$85	April 18 <sup>th</sup>
4/26/12 Thurs	4:00 p.m.	Basic First Aid and Adult CPR (4 hours)	Pottsville	\$60	April 19 <sup>th</sup>
4/26/12 Thurs	8:00 a.m.	Game of Logging – Level 1 (8 hours)	Wellsboro	\$60 <sup>1</sup>	April 19 <sup>th</sup>
4/27/12 Fri	8:00 a.m.	Game of Logging – Level 1 (8 hours)	Honesdale	\$60 <sup>1</sup>	April 6 <sup>th</sup>
5/2/12 Wed	8:00 a.m.	Professional Timber Harvesting Essentials (8 hours)	Honesdale	\$85	April 25 <sup>th</sup>
5/3/12 Thurs	4:00 p.m.	Basic First Aid and Adult CPR (4 hours)	Fishertown	\$60	April 26 <sup>th</sup>
5/4/12 Fri	8:00 a.m.	Game of Logging – Level 1 (8 hours)	Laughlintown	\$60 <sup>1</sup>	April 22 <sup>nd</sup>
5/9/12 Wed	8:00 a.m.	Professional Timber Harvesting Essentials (8 hours)	Fishertown	\$85	May 2 <sup>nd</sup>
5/15/12 Tues	8:00 a.m.	Game of Logging – Level 1 (8 hours)	Warriors Mark	\$60 <sup>1</sup>	May 9 <sup>th</sup>
5/16/12 Wed	8:00 a.m.	Professional Timber Harvesting Essentials (8 hours)	Warriors Mark	\$85	May 9 <sup>th</sup>
5/17/12 Thurs	8:00 a.m.	Basic First Aid and Adult CPR (4 hours)	Warriors Mark	\$60	May 9 <sup>th</sup>
5/17/12 Thurs	8:00 a.m.	Game of Logging – Level 1 (8 hours)	Penfield	\$60 <sup>1</sup>	May 11 <sup>th</sup>

<sup>1</sup> Individuals insured through Eastern Forestry Insurance Group can have the \$60 registration fee for GOL classes paid by WJ Cox Insurance. Please submit proof of insurance with your registration form.

<sup>2</sup> Northern Tier Hardwood Association Members can apply for a 50% reimbursement of registration costs after completing the course. Contact NTHA at 570-265-7753.

**Continuing Education Training –** One(1) year of CE credit is given for each four(4) hours of training. See the complete PA SFI® Training Program Policy at [www.sfiopa.org](http://www.sfiopa.org).

Course Date	Time	Course Name (Course Descriptions on Registration form)	Location	Cost <sup>2</sup>	Register By
***** If you have or have had a valid PA SFI® Training Card in the last 5 years, you can attend a Professional Timber Harvesting Essentials class above for Continuing Education Credit...					
***** If you have not taken Game of Logging – Level 1 within the last 5 years, you can attend a Game of Logging – Level 1 class above for Continuing Education Credit...					
3/27/12 Tues	12:00 p.m.	Risk Mgmt. System & OSHA Standards/Inspection Process(4 hours)	Johnsontown	\$45	March 20 <sup>th</sup>
4/13/12 Fri	8:00 a.m.	Game of Logging – Storm Damage Cleanup (8 hours)	Honesdale	\$60 <sup>1</sup>	May 11 <sup>th</sup>
4/17/12 Tues	5:00 p.m.	Wildlife – Young Forest Initiative (4 hours)	Smethport	\$45	April 11 <sup>th</sup>
4/19/12 Thurs	5:00 p.m.	Wildlife – Young Forest Initiative (4 hours)	Clarion	\$45	April 12 <sup>th</sup>
4/26/12 Thurs	5:00 p.m.	Wildlife – Young Forest Initiative (4 hours)	Laughlintown	\$45	April 19 <sup>th</sup>
4/27/12 Fri	8:00 a.m.	Hardwood Log Bucking Improvement (8 hours)	Erlinton, PA	\$60 <sup>3</sup>	April 21 <sup>st</sup>
5/1/12 Tues	8:00 a.m.	Landing Safety (4 hours)	Dushore	\$45	April 24 <sup>th</sup>
5/1/12 Tues	1:00 p.m.	Risk Mgmt. System & OSHA Standards/Inspection Process(4 hours)	Dushore	\$45	April 24 <sup>th</sup>
5/2/12 Wed	8:00 a.m.	Garage Safety (4 hours)	Tunkhannock	\$45	April 25 <sup>th</sup>
5/15/12 Tues	5:00 p.m.	Wildlife – Young Forest Initiative (4 hours)	Dushore	\$45	May 8 <sup>th</sup>
5/17/12 Thurs	1:00 p.m.	Wildlife – Young Forest Initiative (4 hours)	Warriors Mark	\$45	May 10 <sup>th</sup>
5/18/12 Fri	8:00 a.m.	Game of Logging – Level 2 (8 hours)	Honesdale	\$60 <sup>1</sup>	May 11 <sup>th</sup>
5/22/12 Tues	5:00 p.m.	Wildlife – Young Forest Initiative (4 hours)	Harrisburg	\$45	May 15 <sup>th</sup>
5/24/12 Thurs	5:00 p.m.	Wildlife – Young Forest Initiative (4 hours)	Wellsboro	\$45	May 17 <sup>th</sup>
5/30/12 Wed	9:00 a.m.	Estimating Woody Biomass (8 hours)	Penfield	\$60 <sup>3</sup>	May 23 <sup>rd</sup>
5/31/12 Thurs	9:00 a.m.	Estimating Woody Biomass (8 hours)	Pottsville	\$60 <sup>2</sup>	May 24 <sup>th</sup>
6/5/12 Tues	8:30 a.m.	Sustainable Forestry II (8 hours)	Rock Springs, PA	\$45	May 28 <sup>th</sup>

<sup>1</sup> Individuals insured through Eastern Forestry Insurance Group can have the \$60 registration fee for GOL classes paid by WJ Cox Insurance. Please submit proof of insurance with your registration form.

<sup>2</sup> Northern Tier Hardwood Assoc. Members can apply for a 50% reimbursement of registration costs after completing the course. Contact NTHA at 570-265-7753 for reimbursement and membership details.

<sup>3</sup> Keystone Wood Products Assoc. is a financial sponsor of these courses. Registration cost for KWPA members is \$30 for these courses. Note membership on reg. form. Contact KWPA at 570-974-8946 for membership details.

**Other Continuing Education Training –** The following events are organized by outside groups, and qualify for CE credit. Participants wanting CE credit must submit proof of course attendance and a check for \$20 made payable to PA SFI® SIC for administrative costs. Contact the course sponsor to register.

Course Date	Time	Course Name	Location	Cost <sup>2</sup>	Register By
March 3 <sup>rd</sup> 2012	9:00a-3:30p	Woodland Owners Conference (4 hours CE credit) – Williamsport, PA – Contact PS Ext. 877-489-1398 to register by Feb 23rd			
March 6 <sup>th</sup> 2012	8:00a-4:00p	Dirt & Gravel Roads (8 hours CE credit) – Smethport, PA – Contact McKean County Cons. District, 814-887-4001, to register by Feb. 28th			
March 9 <sup>th</sup> 2012	8:30a-3:00p	'12 Tri-Co. Equip. Operators Workshop (4 hours CE credit) – Beaver Springs, PA – Contact Snyder Co. Cons. Dist., 570-837-3000x10 to register by March 2nd			
March 14 <sup>th</sup> 2012	8:00a-4:00p	18 <sup>th</sup> Annual NE Reg. Contractors & Engineers Workshop (8 hours CE credit) – LaPlume, PA – Contact Wyoming Co. Cons. Dist., 570-836-2589 by March 1st			
March 14 <sup>th</sup> 2012	8:00a-4:00p	Forest Health 2012 "East" (8 hours CE credit) – Nanticoke, PA – Contact PSU Ext. at 877-489-1398 to register by March 7 <sup>th</sup>			
March 15 <sup>th</sup> 2012	8:00a-4:00p	Forest Health 2012 "West" (8 hours CE credit) – St. Marys, PA – Contact PSU Ext. at 877-489-1398 to register by March 7 <sup>th</sup>			
April 5 <sup>th</sup> 2012	8:30a-4:30p	Erosion & Sedimentation Control in our Forests (8 hours CE credit) – Port Allegany, PA - Contact McKean County Cons. District, 814-887-4001, to register.			
All Year		Visit <a href="http://paforeststewards.cas.psu.edu/associations.html">http://paforeststewards.cas.psu.edu/associations.html</a> and click on Calendar for various training opportunities or call your local PSU Ext. Office.			
All Year		Game of Logging Training - Contact Kevin Snyder Logging, Pleasantville, PA (814) 589-5231 for GOL training opportunities.			
All Year		Visit <a href="http://rmnext.cas.psu.edu/PAForestWeb/">http://rmnext.cas.psu.edu/PAForestWeb/</a> - PA Forest Web Seminars - Live Broadcasts only - Contact the PA SFI office for more details. 888-734-9366			

<sup>2</sup> Northern Tier Hardwood Association Members can apply for a 50% reimbursement of registration costs after completing the course. Contact NTHA at 570-265-7753.

Visit [www.sfiopa.org](http://www.sfiopa.org) for the most current training schedule. Programs may be added or cancelled at any time. For additional information, please contact PA SFI® at: (707) 731-4269, (888) 734-9366 (toll free), [pasfi@sfiopa.org](mailto:pasfi@sfiopa.org)



# Pennsylvania Sustainable Forestry Initiative®

## 2012 Course Registration Form

- **Registration Fees are non-refundable after the course registration deadline if the course is held and you do not attend.**
  - **Courses may be cancelled if a minimum number of students are not registered by the registration deadline.**
  - **For a full description of the PA SFI® Training Policies, please visit [www.sfiopa.org](http://www.sfiopa.org) or contact the PA SFI® office.**
- (( Please Print Clearly )) (( One Course Participant Per Form ))

Attendee	Course Date	Course Name	Course Location	Cost
<b>Name:</b> (Full First, Middle Initial, Last)				
<b>Home Mailing Address:</b>				
<b>Home Phone:</b> (      ) _____ - _____ <b>Email:</b>				
<b>Mail to:</b> (Make checks payable to "PA SFI SIC") <b>Pennsylvania SFI®</b> , State Implementation Committee 914 W. Lockhart Street Sayre, PA 18840 (570) 731-4269 (office/fax) or (888) 734-9366 (toll free) Email: <a href="mailto:pasfi@sfiopa.org">pasfi@sfiopa.org</a> Web: <a href="http://www.sfiopa.org">www.sfiopa.org</a>			<b>Total Amount Enclosed:</b>	

### 2012 Course Descriptions

**Core Training – Required to receive a PA SFI® Training Card. All 3 requirements must be completed within 2 years.**

The core level courses are intended to provide a basic level of knowledge from which to expand an individual’s professional development through continuing education.

- **Professional Timber Harvesting Essentials (8 hours)** – Part one focuses on recognizing and negating hazards that timber harvesting operations encounter daily. It includes modules covering equipment safety, truck safety and an overview of OSHA regulations applicable to logging. Part 2 focuses on the Erosion & Sediment Pollution Control Plan required by Chapter 102, understanding Pennsylvania’s Clean Streams Laws, permits a logger may need when working near streams and wetlands, Best Management Practices (BMPs), and the importance of harvesting aesthetics, job layout, and planning.
- **Game of Logging – Level 1 (8 hours)** - focuses on introducing the participant to the “open face” felling technique and the development of skills to safely use it. Topics covered include personal protective equipment, chainsaw safety features, chainsaw reactive forces, bore cutting, pre-planning the fell, and understanding hinge wood strength.
- **First Aid/CPR (4 hours)** - The focus of this program is on First Aid and Adult CPR training that meets OSHA Logging requirements and American Red Cross (or equivalent) certification. Training can also be taken locally through the Red Cross, EMS, Hospital, etc.

**Continuing Education (CE) Courses – One(1) year of CE credit is given for each four(4) hours of training. CE credit awarded (Training Card Expiration Date) is limited to three(3) years from current calendar year. CE credit will not be awarded for taking the same class more than once in a five (5) year period.** Continuing Education courses are intended to give training in specific subject areas and provide for an individual’s professional development.

- **Estimating Woody Biomass (8 hours)** - This course was developed by Dr. Steve Bick and the Northeast Loggers Association (NELA). The basics of sampling and tree measurement are introduced. Information is presented on determining woody biomass volumes, how to collect data from variable plots, and how to calculate biomass volumes from the data that has been collected.
- **Game of Logging (8 hours each Level)** - These courses cover chainsaw safety and safe/efficient harvesting techniques. **Level 1** focuses on Personal Protective Equipment, 5-point saw safety check, 5 parts of the cutting tooth, 4 reactive forces, plunge cutting, and directional tree felling. **Level 2** focuses on saw maintenance, chain sharpening techniques, releasing spring poles safely, and directional tree felling. **Level 3** focuses on directional felling trees with heavy side-lean and back-lean through the use of wedges and safe/productive limbing and bucking. **Level 4** focuses on dealing with hung trees, directional felling of hazardous trees, and efficient joy layout. Levels must be completed consecutively.
- **Garage Safety (4 hours)** – This 4-hour course presented by W.J. Cox Insurance covers safety issues associated with garage setup, heavy machinery repair, power equipment, lockout/tag out procedures, and hazardous materials management.
- **Hardwood Log Bucking Improvement (8 hours)** – This program is designed to integrate field, classroom and computer simulation techniques to teach better log bucking decisions. The goal is to increase the value and quality of hardwood logs by improving the log bucking skills of timber harvesters and yard workers.
- **Landing Safety (4 hours)** – This 4-hour course presented by W.J. Cox Insurance covers landing safety issues, equipment spacing, landing traffic, and other activities associated with managing forest products on your timbersale.
- **Risk Management System & OSHA Standards/Inspection Process (4 hours)** – This 4-hour course presented by W.J. Cox Insurance covers developing and using a Risk Management System for your harvesting operation. The instructor will also cover the OSHA standards related to timber harvesting operations and what an OSHA inspection of a harvesting operation would entail.
- **Sustainable Forestry II (8 hours)** – This 8-hour course presented by Penn State Extension covers developing and implementing sustainable forest management techniques and provides a better understanding of the forest resource.
- **Wildlife – Young Forest Initiative (4 hours)** – Developed through a cooperative with the Wildlife Management Institute, this course discusses the importance of creating early successional forest conditions for the benefit of multiple wildlife species. Timber harvesters will learn and be given tools to identify and create habitat systems for the American Woodcock, Golden Winged Warbler, and other wildlife species important to forest landowners.

The Sustainable Forestry Initiative®, SFI®, and the SFI® Implementation Committee Logo are registered trademarks of SFI, Inc.

**PA SFI® SIC Program Partners**

*Program “Partners” are committed to the SFI® Standards and pay a set contribution annually based on mill production from PA forest products.*

- Appleton Papers, Inc.
- Blue Ox Timber Resources
- Brode Lumber Company
- Brooks Lumber & Timber Harvesting
- Craftmaster Manufacturing, Inc.
- Cummings Lumber Company, Inc.
- D&D Wood Sales
- Deer Park Lumber
- Dwight Lewis Lumber Company
- Heacock Lumber Company
- Hyma Devore Lumber Mill, Inc.
- Kern Brothers Lumber Company
- Lapp Lumber Company
- Lee Brothers Lumber Company
- Matson Lumber Company
- Mick Brothers Lumber Company
- Ordie Price’s Sawmill
- P&S Lumber Company
- Patterson Lumber Company
- Pine Creek Lumber
- R.J. Hoffman & Sons Lumber
- RAM Forest Products, Inc.
- Salem Hardwood, Inc.
- St. Mary’s Lumber Company
- Wheeland Lumber

**PA SFI® SIC Program Supporters**

*Program “Supporters” help to promote sustainable forestry practices and pledge meaningful contributions.*

- Bingaman & Son Lumber
- Brownlee Lumber Company
- Coastal Lumber Company
- Hobbes Forestry Services
- Horizon Wood Products, Inc.
- Keystone Chipping, Inc.
- W.J. Cox Associates

**Favorable Marcellus Road Provision Enacted as Law**

On February 13th, Governor Corbett signed the omnibus Marcellus fee and regulatory bill (HB 1950) into law. This legislation contains a provision which favorably addresses the concerns of forest product companies utilizing posted state routes in the Marcellus region.

The provision in the new law gives PennDOT 90 days (meaning by May 14th) to adopt an appropriate policy and methodology to provide letters of determination of local delivery for use on state routes posted with weight restrictions. This methodology will include exemptions from 67 Pa. Code Chapter 189 (related to hauling in excess of posted weight limit) for haulers related to at-risk industry sectors.

All sectors of the forest products industry and some 20+ additional industries qualify as an at-risk industry sector, defined as having experienced a 20% or more decline in statewide employment since 2002 or other demonstrated evidence of economic decline.

The new law allows PennDOT to exclude Marcellus-related traffic from local delivery status on state routes, based upon its disproportionate and qualitatively different impact upon highway and bridges.

The new methodology will go into effect immediately once it is published in the Pennsylvania Bulletin. It will be in effect until December 31, 2015.

Initial conversations with PennDOT representatives suggest that it will take a number of weeks or more to finalize the new policy and methodology. PFFPA will monitor PennDOT’s progress and seek opportunities to provide feedback during this process.

Until that time, haulers should expect to continue to operate under the traditional road bonding rules on state routes unless told otherwise by PennDOT. Forest product and other at-risk haulers should also understand that the new PennDOT methodology may include some parameters to promote continued use of hauler

best practices and discourage excessive abuse to roads.

**PFFPA and PA SFI® encourage its members to continue to utilize best practices and good stewardship on Pennsylvania’s roads - particularly as PennDOT finalizes this new policy in a timeframe paralleling the next spring break-up.**

The provision to address our industry concerns was negotiated between legislative leaders and Corbett Administration officials and included in the 174 page omnibus Marcellus fee and regulatory bill. PFFPA reviewed and provided input on the provision prior to its inclusion in the legislation.

Enactment of this new law is a victory for PFFPA members and other forest product companies. It will insulate forest product haulers from the costs of additional road bonding and shield them from the risk of exorbitant road repair costs while operating on state routes in regions experiencing Marcellus gas development activities.

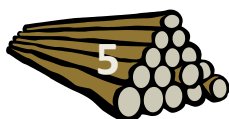
Paul Lyskava, PFFPA

**Inconsistent Practices Form**

Inconsistent practices either cause or have the potential to cause, problems associated with a timber harvest. Likely issues are soil erosion, stream sedimentation, failed regeneration, and/or poor residual stand conditions. All have negative consequences on forest sustainability.

The “Inconsistent Practices Program” provides a venue for reporting and addressing these concerns. The form can be downloaded at [www.sfiofpa.org](http://www.sfiofpa.org) under “Forms” or can be mailed to you by contacting the PA SFI® office at (888) 734-9366 toll free or by email at [pasfi@sfiofpa.org](mailto:pasfi@sfiofpa.org).

There were no Inconsistent Practices reports received by the PA SFI® office in 2011.





PA SFI® Implementation Committee  
914 W Lockhart Street  
Sayre, Pennsylvania 18840

*The SFI® Program is a service of SFI, Inc.*

### The Pennsylvania Sustainable Forestry Initiative® Implementation Committee

2012 Winter Newsletter, Issue #29

#### (M.K Goddard Award Winners, Continued from Page 2)

and the creation of many brush piles for shelter.

An educator at heart, Jay was a teacher for 10 years and high school principal for 26 years. He is also a Pennsylvania Forest Steward, completing his training in 1993. As a member of the Central Susquehanna Woodlands Owners Association, the Lycoming County Woodland Owners Association, and the American Tree Farm System, the Livzieys have shared their forest management experiences and property with many groups and organizations, and dedicated much of their time to educating others about the importance of our natural resources.



L-R: Nate Fice (PA SFI® Program Manager); Jay & Joan Livziey (Award Winners); Gerald Hoy (Service Forester, Nominator); John Portzline (District Forester)



The Sustainable Forestry Initiative®, SFI®, and Implementation Committee Logo

are registered service marks of SFI, Inc.