



State Implementation Committee
(SIC) Members

- John Bouch**, PA Veneers Inc.
- Charlie Brown**, Chair, Glatfelter Pulp Wood*
- Tom Buzby**, Weaber Lumber Inc.*
- Keith Craig**, PA HDC
- Amy Doty**, SFI Inc.
- Dan Evans**, Domtar Paper Co., LLC*
- Nate Fice**, PA SFI®
- Jim Finley**, Penn State University
- James Grace**, Penn State University
- Bob Hobbes**, Hobbes Forestry
- Dave Jackson**, Penn State Coop. Ext.
- Chuck Dibble**, Craftmaster Manufacturing, Inc.
- Jeff Kocheil**, Forest Investment Associates*
- Rich LaBrozzi**, RAM Forest Products
- Mike Lester**, PA Bureau of Forestry
- John Levavasseur**, Hancock Forest Mgmt.*
- Paul Lyskava**, PA Forest Products Association
- Nancy McCloskey**, Forecon, Inc.
- Ken Roberts**, Vice Chair, NewPage Corp.*
- Ron Rohall**, PACD
- Rudean Reynolds**, Weyerhaeuser*
- Todd Sparks**, Hancock Forest Management*
- Dave Sienko**, Sienko Forest Products
- Kevin Stout**, Allegheny Wood Products
- Susan Stout**, USDA Forest Service
- Sue Swanson**, AHUG
- Barrett Wiggins**, Deer Park Lumber Co.
- Jonathan Wirth**, Walker Lumber Co.

* Denotes SFI® Program Participant

Questions or comments regarding the PA SFI® newsletter, contact:

Pennsylvania SFI® SIC
914 W Lockhart Street
Sayre, PA 18840

570-731-4269 or 888-734-9366 (toll free)
[PASFI@sfiopa.org](mailto:PA_SFI@sfiopa.org) or www.sfiopa.org

Moving Forward...

As the economy continues to struggle, the forest industry ebbs and flows with it, no one confident what the future holds. Despite the unknown, contributors to the PA SFI® program remain committed to supporting logger training, landowner outreach, and the principles of sustainable forestry. PA SFI® staff, SIC members, Training Committee members, and volunteers also remain committed to providing high quality educational programs, program support to the forestry community, and using our limited financial resources for the most possible benefit to you.

Thank you to the companies, organizations, and training participants that provide contributions, host training programs, and pay registration fees that allow us to “move forward...” We especially thank the three companies, Dwight Lewis Lumber, Brode Lumber, and D&D Wood Sales who made a new commitment to the program in 2011. For those that are not able to financially support the PA SFI® program, yet understand the important benefit of logger training, I hope you’ll contact me and we can find a way to continue to meet the needs of everyone that relies on the forests of Pennsylvania.

I would also like to thank, Mohn’s Lumber, Rodney Monn, Williams Lumber, Weaver Sawmill, A&L Wood, RJ Hoffman & Sons Lumber, Ted Graybill, Hoffman Bros. Lumber, Yoder Lumber, Renno Bros. Lumber, Bradford Forest Products, Emporium Hardwoods, NALF Log Yard, Ron Andrus, RAM Forest Products, St. Mary’s Lumber, Keystone Chipping, and Industrial Timber & Lumber for hosting my visit to their mill or jobsite and providing me with valuable feedback on the PA SFI® training program.

Contained in this newsletter is the 2011 PA SFI® Block 2 Training Schedule. As you will see, we have another aggressive training program for this fall and greatly appreciate the training sponsorships noted. Please be sure to read it over carefully and all the fine print. It’s hard to get everything necessary on two pages, but the small print will tell you how you can save money on registration fees and who is directly supporting these training programs. The Keystone Wood Products Association and the Northern Tier Hardwood Association deserve a special thank you for the significant grant funding they provide, which keeps registration costs low and allows for high quality programs. Consider joining one of the hardwood utilization groups and learn how your membership can potentially benefit your business and save you money on training.

A few reminders about the training program...Continuing Education Credit is limited to 3 years from the current year regardless of the number of training hours attended, Continuing Education Credit is not available for the same program taken within the last five years, pre-registration and payment is required for all courses, courses may be cancelled if not enough participants are registered by the deadline, so register early, and the most up-to-date training schedule and full version of the PA SFI® Training Program Policy can be found on our website at www.sfiopa.org or by contacting the PA SFI® office.

We continue to work with the Pennsylvania Game Commission on using trained loggers, we were awarded grant funding from DEP to update and revise the Environmental Logging course for next year, we continue to look for and develop new classes that will benefit you, and we are always interested in hearing your ideas, so don’t hesitate to contact me.

Nate Fice, Program Manager

Sustainable Forestry Initiative (SFI®)

The Sustainable Forestry Initiative Program is a voluntary, industry driven effort developed to ensure that future generations will have the same abundant, healthy, and productive forests we enjoy today.

Created in 1995 by the American Forest & Paper Association (the national trade organization representing the United States forest products industry), SFI® is a program of comprehensive forestry and conservation practices, which now functions under SFI, Inc., a registered 501(c)(3) organization. In order to broaden the practice of sustainable forestry in our state, an Implementation Committee was formed to develop the Pennsylvania Sustainable Forestry Initiative®. Today, the PA SFI® program works to ensure the progress of the national initiative, here in Pennsylvania.

SFI, Inc. Program Participants in PA

These PA Companies are affiliated with the SFI® Program at the national level through independent third-party certification and provide direct involvement and financial support to the PA SFI® Program.

Domtar Paper LLC

Forest Investment Associates

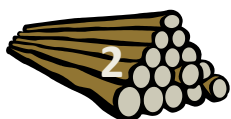
Glatfelter Pulp Wood Company

Hancock Forest Management

NewPage Corporation

Weaver, Inc.

Weyerhaeuser



Outstanding Sawmill Operator

Dwight Lewis Lumber Company

Hills Grove, Pennsylvania

Melvin and Marc Lewis, and Dwight Lewis Lumber Company of Hills Grove, Pennsylvania were recently honored as the recipient of the Northeastern Loggers' Association (NELA) "2010 Outstanding Sawmill Operator Award," which was presented at the NELA Annual Logger's Banquet in Brewer, Maine.

Lewis company lands are certified through the Forest Stewardship Council (FSC) and their sawmill is FSC Chain of Custody certified.

Lewis Lumber is a PA SFI® "Partner" mill and works with PA SFI® trained logging contractors. Congratulations to Melvin and Mark, and Dwight Lewis Lumber Company as the recipient of this prestigious award and their dedication to sustainable forestry.

PA SFI® Supports 2011 4-H

Forestry Field Day

The PA SFI® program was a sponsor of the 2011 4-H Forestry Field Day held on May 7th at the Laurel Haven Conservation Education Center in Julian, PA. The event was hosted by the Penn State School of Forest Resources Extension program.

Participants in the 4-H program have to demonstrate their skills in tree measurement, tree identification, forest health, compass use, topographic map reading, and applied forestry principles.

The top five "senior track" winners were Nichele Olson, Sam McLaughran, Jesse Isenberg, and Garrett Richardson from Indiana County, and Darton Harwick from Tioga County. Congratulations to the winners and all that participated.

Thank you to David Jackson and Sanford Smith with Penn State Extension for organizing the event.

M.K. Goddard Forest Management & Sustainability Award

The PA SFI® program is the sponsor of the M.K. Goddard Forest Management & Sustainability Award given annually to a forest landowner who exemplifies forest stewardship, practices sustainable forestry, and is committed to educating others.

The 2011 award winner will be announced and recognized at the Pennsylvania Forestry Association (PFA) Annual Meeting Banquet in Mont Alto, PA. For more information about the event, please contact PFA at <http://pfa.cas.psu.edu/> or call (717) 766-5371.

DEP Working on Changes to Erosion & Sedimentation Plans

DEP held a meeting with an industry diverse working group in June of this year to begin revising the E&S plan application, Timber Harvesters Action Packet, and supporting documents that are necessary to meet the recently adopted changes to the DEP Chapter 102 E&S and Stormwater regulations.

Required changes to these documents will be minimal and trained individuals will still be able to complete the plans. The regulatory changes did not significantly impact timber harvesting operations under the 25-acre earth disturbance threshold.

The PA SFI® training program and existing implementation of Best Management Practices (BMPs) during timber harvests helped prevent stricter regulations on the timber harvesting community. Field observations by a broad spectrum of resource professionals indicate a continued improvement in preventing and addressing soil erosion issues related to forestry operations.

The new forms are expected to be finalized in early 2012. PA SFI® staff will remain involved in the process, make forms available, and adapt training programs as necessary.

PA SFI® SIC Program Partners

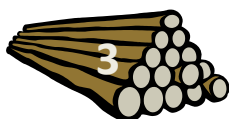
Program “Partners” are committed to the SFI® Standards and pay a set contribution annually based on mill production from PA forest products.

- Appleton Papers, Inc.
- Blue Ox Timber Resources
- Brode Lumber Company
- Brooks Lumber & Timber Harvesting
- Craftmaster Manufacturing, Inc.
- Cummings Lumber Company, Inc.
- D&D Wood Sales
- Deer Park Lumber
- Dwight Lewis Lumber Company
- Heacock Lumber Company
- Hyma Devore Lumber Mill, Inc.
- Kern Brothers Lumber Company
- Lapp Lumber Company
- Lee Brothers Lumber Company
- Matson Lumber Company
- Mick Brothers Lumber Company
- Ordie Price’s Sawmill
- P&S Lumber Company
- Pine Creek Lumber
- R.J. Hoffman & Sons Lumber
- RAM Forest Products, Inc.
- Salem Hardwood, Inc.
- St. Mary’s Lumber Company
- Wheeland Lumber

PA SFI® SIC Program Supporters

Program “Supporters” help to promote sustainable forestry practices and pledge meaningful contributions.

- Bingaman & Son Lumber
- Brownlee Lumber Company
- Coastal Lumber Company
- Hobbes Forestry Services
- Horizon Wood Products, Inc.
- Keystone Chipping, Inc.
- W.J. Cox Associates



Outcome Uncertain on PennDOT Road Posting Changes

PennDOT efforts to address the road damage caused by Marcellus Shale is resulting in significant collateral damage against forest product mills, loggers and truckers. The proliferation of posted state routes continues at a frantic pace across the northern tier and more forest product operations find themselves at risk of co-bonding a road with gas-related traffic – and being billed tens of thousands of dollars in road repair costs.

In the spring, PennDOT proposed an emergency regulation that would create more problems than solutions. Among its provision, the proposal would have provided no blanket relief from bonding and repair requirements on roads posted due to Marcellus traffic; and prohibited the use of the local delivery exemption for loggers and mills, even if a facility was located on a posted state route. Instead, it would have created a Type 4 permit which would exempt low volume haulers from bonding the repair costs up to a maximum of 5 trips/day and 50 trips/annually, subject to the discretion of PennDOT.

Due to the protests by the Pennsylvania Forest Products Association, DNCR and others, PennDOT has pulled back on the proposed emergency regulation in order to develop some additional alternatives for potential relief for haulers. Additionally, the Governor’s Marcellus Shale Advisory Commission called on PennDOT to provide greater flexibility and fairness in the interactions between Marcellus traffic and other users on state posted roads; and to provide PennDOT with a mechanism to legally invoice the costs of road repairs on non-posted roads, where posting would be impractical or undesirable.

The forest products industry has a documented record of utilizing best practices and commonsense to minimize its impacts on roads. They should not be unfairly asked to subsidize the road repair costs of another industry which operates under a

It is yet to be seen if PennDOT’s next proposal will be more fair and equitable to those individuals and companies who have operated in Pennsylvania for decades and which may not be able to weather the impact of these escalating road costs.

Paul Lyskava, PFFPA

State Timber Sale Inspections to Emphasize on safety / E&S Plans

DCNR is asking its district forest staff to emphasize some key items, to address deficiencies and corrective action recommendations that were part of the agency’s most recent audit for its continued FSC certification. Items of emphasis:

Check to ensure the E&S Plan is on-site and available at the log landing at all times, from the start of any earth disturbance activity until final seeding and retirement. Keeping a copy in a pick-up truck (which leaves the site daily) will not be considered as compliant. DCNR suggest placing a copy of the E&S plan in a zip-lock bag, a small piece of PVC piping with its ends capped or a weatherproof box, then attaching this to a tree near the log landing. State law requires these plans be available on-site at all times.

Weekly check that loggers are wearing the proper safety equipment, including hand, leg, foot, head, and eye/face protection.

Paul Lyskava, PFFPA

Inconsistent Practices Form

Inconsistent practices either cause or have the potential to cause, problems associated with a timber harvest. Likely issues are soil erosion, stream sedimentation, failed regeneration, and/or poor residual stand conditions. All have negative consequences on forest sustainability.

The “Inconsistent Practices Program” provides a venue for reporting and addressing these concerns. The form can be downloaded at www.sfiopfpa.org under “Forms” or can be mailed to you by contacting the PA SFI® office at (888) 734-9366 toll free or by email at pasfi@sfiopfpa.org.

There were no Inconsistent Practices reports received by the PA SFI® office in 2010.

The Pennsylvania Sustainable Forestry Initiative® State Implementation Committee

2011 Summer Newsletter, Issue #28

Individuals that completed the PA SFI® Core Training Requirements in 2011

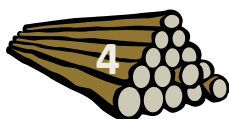
Environmental Logging (8 hours)
Logging Safety (8 hours)
First Aid & CPR (4 hours)

- Andrus, Ronald L
- Beckner, Jeremy
- Bell, Zachary X
- Bowser, Russell Dean
- Curfman, Richard B
- Eckstrom, David W
- Eckstrom, Joseph
- Ernst, Ian
- Esposti, Edward
- Gabriel, Steven
- Hasty, Anna P
- Heilbrun, Richard E
- Hoy, Gerald
- Johnson, Michael D
- Jones, Ross
- Bender, Leslie
- Justick, Jr, Martin
- Klawuhn, Chad
- Krug, Alan
- Krug, Ed
- Lapp, Mark
- Miller, Randy E
- Millington, Ronald L
- Moore, Jessica L
- Neal, Travis M
- Peachey, Matthew
- Postelwaite, William
- Reining, Paul
- Ross Jr, Lawrence
- Smoker, Jack L
- Staub, Thomas E
- Wells, Charles
- Welsh, Cory J
- Wilson, Daniel J
- Yatonsky, Jesse

Current PA SFI® Cardholders (8/23/2011) (Last Name, First Name, MI, Card Expiration Year, Total Training Hours)

Akers	Robert		2012	40	Bucks	Steven	N	2011	60	Durandetta	Shay		2012	62	Hartnft	Andrew		2013	64
Alackness	Joseph	Blaise	2011	70	Buehler	Justin		2013	32	Easton	Shane		2012	28	Hartzler	Michael	J	2012	28
Albaugh	Dan		2012	24	Buhl	Jeff		2012	28	Eby	Jeffrey		2014	40	Hasty	Anna	P	2012	20
Albaugh	Rick		2012	36	Burdge	Mark		2011	28	Eby	Russell	L	2014	40	Hawkes	Steven		2011	44
Allen	Bradley	J	2011	64	Byler	Andrew	L	2012	28	Eck, Sr.	Stephan		2014	64	Haynes	Robert	G	2012	60
Allen	John		2012	78	Byler	Jacob	J	2011	20	Eckstrom	David	W	2012	24	Haynes	William	J	2012	60
Althouse	Bill		2013	36	Byler	Joseph	L	2011	24	Eckstrom	Joseph		2012	20	Hazen	Matthew		2013	40
Andrus	David	E	2012	32	Byler	Vincent	J	2011	20	Edwards	Dean		2011	20	Heed	Robert		2011	24
Andrus	Ronald	L	2013	60	Callihan	David		2011	28	Elias	Paul		2011	20	Heilbrun	Richard	E	2012	20
Andrus	Ronald	E	2013	76	Cameron	Chris		2011	48	Engel	Matt		2011	40	Hemphill	Charles		2011	54
Andrus	Scott		2011	72	Cameron	Duane		2011	36	Ensor	Elvis	A	2011	28	Hillyard	Randall		2011	28
Araway	Joseph		2014	56	Campbell	James	O	2013	72	Ernst	Ian		2014	44	Himes, Jr.	Jerry		2012	44
Arnold	Thomas		2013	40	Canfield	Joe		2014	64	Esposti	Edward		2013	32	Hobbes, Jr.	Robert		2016	86
Asel	Dennis		2011	28	Carr	Timothy		2013	40	Esposti	Joseph	J	2011	44	Hobby	Josh		2012	44
Asel	Norman		2013	72	Carvell	John	A	2011	64	Esposti	Michael		2011	36	Hoffman	Abram		2012	48
Asel	Travis		2013	72	Carver	David	C	2011	40	Eyer	Kenneth	L	2011	48	Hoffman	Luke		2011	28
Aungst	Jeffrey	L	2013	40	Cary	Scott	R	2014	76	Feldman	James		2012	60	Hoffman	Michael		2012	44
Austin	Eric	A	2011	24	Cessna	Douglas		2011	70	Felix	David		2014	56	Hoffman	Seth		2012	44
Austin	Melissa	G	2011	24	Cessna	John		2012	68	Felmlee	Greg		2011	40	Hoffman	Stephen		2014	52
Austin	Mickey		2012	36	Chamberlin	Nick		2012	36	Ferris	Matthew		2011	32	Hoko	Jeffrey	A	2014	56
Ball	Chet		2012	32	Chapman	James	A	2011	68	Fetzer II	Roy		2011	40	Holt	John		2013	44
Ball II	James	D	2012	32	Chappie	Steve		2011	68	Fields	Craig		2013	76	Holt	John		2013	64
Barnett	Derek		2011	24	Chubon	Jeffrey		2013	32	Filler	Trent		2011	20	Holt	Michael		2012	40
Barnett	Kellen		2011	24	Clark	Jaden		2011	20	Fink	Shawn		2012	24	Holt	Thomas	W	2011	44
Barnett	Stan		2012	32	Clark	Richard	E	2011	64	Fish	Michael		2012	28	Holtry	Troy	L	2013	64
Barr	Jacob		2011	20	Cleaver	Larry		2011	28	Flynn	John		2012	60	Horn	Judson	G	2012	36
Barrick	Bill		2013	40	Clouser	Chad		2014	80	Forrester	Steve		2013	72	Horn	Larry	G	2012	36
Baughman	Charles		2012	48	Clouser	Jason		2011	28	Forsythe	Kevin		2016	44	Hostetler	Arlin	J	2011	24
Baum	Doyle		2013	56	Cobb	Fred		2011	32	Frantz	Phil		2012	72	Hostetler	Harvey	C	2011	20
Bauman	A Lamar		2012	72	Coblentz	Crist		2011	24	Frazier	Tim		2013	48	Hostetler	Norman	H	2011	20
Bean	Terry	L	2012	32	Coblentz	Henry	C	2011	24	Fremer	Paul		2011	52	Hostetler	Raymond	H	2011	20
Becker	Michael		2013	48	Coblentz	Mahlon	C	2012	28	Frey	James	E	2011	28	House	Kevin		2011	28
Beckner	Jeremy		2012	20	Coldsmith	Art	J	2013	52	Fulton	Ian		2012	28	House	Scott		2013	36
Beegle	Montie		2012	28	Confie	James	M	2012	36	Gabriel	Steven		2012	20	Houseknecht	Bradley	D	2011	68
Beichner	Ryan	D	2011	28	Connelly	Kevin		2012	24	Gardner	Calvin		2011	64	Hovatter	Michael		2011	20
Bell	Zachary	X	2012	20	Conner	Charles	L	2015	52	Gardner	Gerry		2012	48	Hoy	Gerald		2012	34
Bender	Leslie		2011	52	Conrad	Richard		2012	72	Garner	John		2014	42	Huck	Richard		2016	48
Bender, Jr.	Richard		2011	52	Cooley	Jessie		2012	28	Garrison	Richard	L	2011	68	Huffman	Bill		2013	32
Benner	Alan	D	2013	78	Cooney	Dick		2013	72	Geiman	Dean	J	2012	64	Huffman	Joe		2013	32
Bennett	Rich		2011	34	Coons	Troy		2012	68	Gessner	Andrew	L	2012	72	Hunsicker	Kevin	A	2012	36
Berlin	James	M	2011	24	Copello	Gino		2013	40	Gessner	Vernon		2012	68	Hunt	Randy	S	2011	36
Bernsdson	Greg		2013	36	Cornish	Chester	J	2011	24	Gibson	Duane		2011	36	Huss	Carl		2011	60
Biel	John		2014	84	Coulter	Patrick		2011	20	Gilbert	Viateur		2011	76	Iampietro	Paul	M	2016	88
Bilger	Shawn		2011	28	Cowan	Mike		2012	36	Gilliland	Bradley		2012	36	Iorfida	Denny		2012	74
Black	Kevin	E	2013	64	Cowan	Tim		2013	66	Glass	Dan		2011	36	Jackson	Greg	A	2014	40
Black	Nathaniel		2012	28	Cressman	Adam		2012	32	Glover	Joseph	D	2011	64	Jandrew	Gregg		2015	82
Bloch	Zachary		2012	24	Crissman	Gus	W	2012	36	Gosnell	Curt	P	2013	60	Jarrett	Jeffrey	F	2011	52
Bole	Mark		2011	24	Crissman	Tim		2011	36	Grab	John		2012	32	Jewart	Alfred		2012	72
Boleen	Kenneth	R	2011	24	Cummings	Donald		2011	40	Graham	Andrew	L	2013	40	Jewart	Cody	A	2012	32
Bombardier	Stephen		2015	40	Curfman	Richard	B	2014	28	Graham	Darick		2013	48	Johnson	Michael	D	2012	36
Bouch	John	A	2019	104	Dake	Brandon		2011	32	Graham	Jeff		2011	56	Johnson	Peter	C	2014	56
Bourne	Christopher	J	2011	20	Dake	Corey		2011	32	Graham	Lee	T	2013	44	Johnson	Richard	L	2013	32
Bowley	Craig	J	2013	32	Daugherty	John		2015	50	Graham	Leon	J	2013	72	Johnson II	Richard		2012	36
Bowser	Russel Dean		2011	40	Davenport	B. Scott		2013	32	Graham	Michael	L	2013	72	Joll	Robert	A	2011	36
Bratz	Donald		2013	44	Davis	James	B	2011	56	Graham	Neal		2013	78	Jones	Michael	C	2011	56
Brehm	Dennis	M	2014	74	DeBoer III	Kenneth	W	2013	36	Graham	Roger	L	2013	76	Jones	Ross		2012	48
Bricker	Robert	A	2012	32	Deeb	Brian	M	2014	56	Graham	Shawn	M	2013	72	Justick, Jr	Martin		2014	28
Bright	Ryan		2011	66	Delancey	Christian	M	2011	32	Graham	Walt		2012	68	Karr	Randy	L	2013	40
Brinks	John		2012	28	DeLarme	James	D	2012	32	Grant	Dave		2012	36	Kauffman	David	S	2012	32
Brinks	Ralph		2012	28	Dellinger	Douglas		2013	44	Graves	Joe		2016	86	Kauffman	Lavon	J	2011	40
Brocious	Dillon		2011	20	Desposito	Gene		2011	52	Graybill	Sheldon	J	2013	32	Kauffman	Marvin		2014	44
Brooks	Stan		2011	64	Dickey	John		2012	44	Graybill	Ted		2012	56	Kays	Tim		2011	24
Brooks, IV	William	W	2012	72	DiJulio	Robert	J	2012	36	Greene	Craig		2014	36	Keller	Jim		2012	40
Broughton	Gerald		2011	56	Dillingier	Lucas	L	2011	48	Greenlee	Rex		2011	24	Kelley, Jr.	Richard	K	2011	66
Brown	Charles	R	2012	72	Dinsmore	Dusty		2011	20	Gregori	Bryon		2012	64	Kerchinski	Edwin	B	2012	48
Brown	Lane		2012	38	Donahue	Michael		2012	36	Grimaud	Jerry	P	2016	80	Kern	Kim		2012	64
Brown	Mark		2011	36	Donovan	Luke		2015	44	Grimes	Todd		2013	36	Kessler	Ira		2012	32
Brown	Scott	A	2011	32	Downs	Todd	R	2012	32	Gunsallus, Jr.	James	R	2012	44	Kinner, Jr.	Tom	H	2011	24
Brownlee	Leroy		2011	32	Dreese, Jr.	Michael	I	2014	84	Haduck	Paul		2012	36	Kinner, Sr.	Tom	H	2011	24
Brubaker	Jordan		2014	40	Duclou	Jesse		2011	36	Hanes	Thomas	E	2012	56	Kio	Cale		2011	24
Brucklacher	Charles		2013	40	Dunlap	Douglas	E	2014	56	Hanes	Troy	A	2012	56	Kipp	Michael	V	2012	28
Brucklacher III	John	E	2012	68	Dunn	Bryan	T	2012	28	Hanley	Dennis	L	2012	24	Klahre	Kenneth	R	2012	72
Brumbaugh	Corey	L	2012	44	Dunn	Ryan		2014	86	Hanselman	Steve		2014	44	Klawuhn	Chad		2012	20
Brumbaugh	Wesley	E	2012	44	Dunn	Scott		2012	24	Harer	Bryan	C	2011	28	Klingler	Neal	D	2011	68
Bryant	Ricky		2012	28	Dunn	William	G	2013	42	Harriman	Gary	R	2014	44	Klussmann	David	J	2012	32

(Continued on Page 7)



The Sustainable Forestry Initiative®, SFI®, and State Implementation Logo are registered service marks of SFI, Inc.



Pennsylvania Sustainable Forestry Initiative® (SFI®)

2011 Block 2 Training Schedule: **September 19th** through **November 18th**

To avoid course cancellations, pre-registration and payment for all classes is required by the registration deadline.

PENNSYLVANIA
SFI1414

Core Training - Must complete Environmental Logging, Logging Safety, and provide proof of current First Aid/CPR certification within a 2-year period to receive a PA SFI® Training Card.

Course Date	Time	Course Name (Course Descriptions on Registration form)	Location	Cost ²	Register By	
09/22/11	Thurs	9:00am	First Aid/Adult CPR (4 hours)	Johnsonburg	\$30	9/15/11
10/19/11	Wed	8:30am	Logging Safety (8 hours)	Clarion	\$60	10/12/11
10/26/11	Wed	8:00am	Environmental Logging (8 hours)	Clarion	\$60	10/19/11
11/09/11	Wed	8:00am	Environmental Logging (8 hours)	Pottsville	\$60	11/2/11
11/09/11	Wed	5:00pm	First Aid/Adult CPR (4 hours)	Pottsville	\$70	11/2/11
11/09/11	Wed	8:00am	Environmental Logging (8 hours)	Warriors Mark	\$60	11/2/11
11/10/11	Thurs	8:00am	Logging Safety (8 hours)	Pottsville	\$60	11/2/11
11/10/11	Thurs	8:00am	Logging Safety (8 hours)	Warriors Mark	\$60	11/2/11
11/11/11	Fri	1:00pm	First Aid/Adult CPR (4 hours)	Warriors Mark	\$50	11/2/11
11/14/11	Mon	8:00am	Environmental Logging (8 hours)	Honesdale	\$60	11/7/11
11/14/11	Mon	5:00pm	First Aid/Adult CPR (4 hours)	Honesdale	\$30	11/7/11
11/15/11	Tues	8:00am	Logging Safety (8 hours)	Honesdale	\$60	11/7/11
11/16/11	Wed	8:00am	Environmental Logging (8 hours)	Wellsboro	\$60	11/9/11
11/16/11	Wed	5:00pm	First Aid/Adult CPR (4 hours)	Wellsboro	\$70	11/9/11
11/17/11	Thurs	8:00am	Logging Safety (8 hours)	Wellsboro	\$60	11/9/11

² Northern Tier Hardwood Association Members can apply for a 50% reimbursement of registration costs after completing the course. Contact NTHA at 570-265-7753.

Continuing Education Training - One(1) year of CE credit is given for each four(4) hours of training. See the complete PA SFI® Training Program Policy at www.sfiopa.org.

Course Date	Time	Course Name (Course Descriptions on Registration form)	Location	Cost ²	Register By	
09/09/11	Fri	8:00am	Game of Logging Level 1 (8 hours)	Honesdale	\$50 ⁴	9/2/11
09/23/11	Fri	9:00am	Planning & Analysis in Timber Harvesting (8 hours)	Honesdale	\$50	9/16/11
09/27/11	Tues	9:00am	Business Management for Timber Harvesters (8 hours)	New Columbia	\$50	9/20/11
09/28/11	Wed	8:00am	Introduction to Forest Management (8 hours)	Smethport	\$50	9/21/11
09/29/11	Thurs	9:00am	GPS for Timber Harvesters (8 hours)	Wellsboro	\$50	9/22/11
09/30/11	Fri	9:00am	GPS for Timber Harvesters (8 hours)	State College	\$50 ³	9/23/11
10/06/11	Thurs	3:30pm	2011 CE Update Course (4 hours)	Fishertown	\$45	9/29/11
10/12/11	Wed	8:00am	Hardwood Log Bucking (8 hours)	Waynesboro	\$50 ³	10/5/11
10/13/11	Thurs	3:30pm	2011 CE Update Course (4 hours)	Laughintown	\$45	10/6/11
10/13/11	Thurs	4:00pm	Boundary Lines, Maps, & Deeds (4 hours)	Harrisburg	\$35 ³	10/6/11
10/14/11	Fri	3:00pm	Boundary Lines, Maps, & Deeds (4 hours)	Dushore	\$35	10/7/11
10/14/11	Fri	8:00am	Game of Logging Level 2 (8 hours)	Honesdale	\$50 ⁴	10/7/11
10/15/11	Sat	8:00am	Boundary Lines, Maps, & Deeds (4 hours)	Honesdale	\$35	10/8/11
10/17/11	Mon	8:00am	Game of Logging Level 1 (8 hours)	Wellsboro	\$50 ⁴	10/10/11
10/18/11	Tues	8:00am	Game of Logging Level 2 (8 hours)	Wellsboro	\$50 ⁴	10/10/11
10/20/11	Thurs	3:30pm	2011 CE Update Course (4 hours)	Smithfield	\$45	10/13/11
10/21/11	Fri	9:00am	Estimating Standing Timber Volume (8 hours)	Warren	\$50 ³	10/14/11
10/25/11	Tues	8:00am	Game of Logging Level 1 (8 hours)	Penfield	\$50 ^{3,4}	10/18/11
10/26/11	Wed	8:00am	Game of Logging Level 2 (8 hours)	Penfield	\$50 ^{3,4}	10/18/11
10/28/11	Fri	8:00am	Job Layout & Profitable Skidding (8 hours)	Potters Mills	\$50 ³	10/21/11
11/01/11	Tues	8:00am	Hardwood Log Bucking (8 hours)	Emporium	\$50 ¹	10/25/11
11/03/11	Thurs	8:00am	Hardwood Log Bucking (8 hours)	Marienville	\$50 ¹	10/27/11
11/04/11	Fri	1:00pm	Boundary Lines, Maps, & Deeds (4 hours)	Fishertown	\$35 ³	10/27/11
11/04/11	Fri	8:00am	Game of Logging Level 3 (8 hours)	Honesdale	\$50 ⁴	10/27/11
11/11/11	Fri	8:00am	2011 CE Update Course (4 hours)	Warriors Mark	\$45	11/4/11
11/17/11	Thurs	8:30am	2011 CE Update Course (4 hours)	Smethport	\$45	11/10/11
11/18/11	Fri	8:00am	Game of Logging Level 4 (8 hours)	Honesdale	\$50 ⁴	11/11/11

¹ The Allegheny Hardwood Utilization Group, Emporium Hardwoods, and Industrial Timber & Lumber are financial sponsors of these courses.

² Northern Tier Hardwood Assoc. Members can apply for a 50% reimbursement of registration costs after completing the course. Contact NTHA at 570-265-7753. NTHA is a financial, course sponsor.

³ Keystone Wood Products Assoc. is a financial sponsor of these courses. Registration cost for KWPA members is \$25 for these courses. Contact KWPA at 570-974-8946 for membership details.

⁴ Individuals insured through Eastern Alliance Insurance Company can register for "Free." Send proof of coverage with registration form.

Other Continuing Education Training Opportunities - The following events are organized by outside groups, but may qualify for CE credit. Participants wanting CE credit must submit proof of course attendance and a check for \$20 made payable to PA SFI® SIC for administrative costs.

Course Date	Time	Course Name	Location	Cost ²	Register By
9/14/11	Wed	3 rd Annual Forest Products Executive Development Workshop (8 hours); State College; \$100; Contact PFPA at 717-901-0420 by Sept. 10 th to register.			
9/24/11	Sat	10 th Annual Central PA Woodlot Management Workshop (4 hours); Clinton County; \$25 (includes lunch); Contact 877-489-1398 by Sept. 19 th to register.			
10/5/11	Wed	NY Skidder Bridge Workshop (8 hours); Allegany, NY; \$100; Limited to the first 20 registrants; Contact NYS DEC, 182 East Union Street, Suite #3, Allegany, NY 14706			
10/24-27/11		Hardwood Lumber Grading Short Course (32 hours); Penn State Forest Res. Lab; \$400; Contact 877-489-1398 by October 10 th to register.			
All Year		Visit http://www.redcross.org/cpr and locate your local chapter to find First Aid & CPR training.			
All Year		Visit http://paforeststewards.cas.psu.edu/associations.html and click on Calendar for various training opportunities or call your local PSU Ext. Office.			
All Year		Visit http://www.dcnr.state.pa.us/forestry/serviceforesters_select.aspx and contact your local service forester for possible training opportunities.			
All Year		Game of Logging Training - Contact Kevin Snyder Logging, Pleasantville, PA (814) 589-5231 for GOL training opportunities.			
All Year		Visit http://mrext.cas.psu.edu/PAForestWeb/ - PA Forest Web Seminars - Live Broadcasts only - Contact the PA SFI office for more details. 888-734-9366			

² Northern Tier Hardwood Association Members can apply for a 50% reimbursement of registration costs after completing the course. Contact NTHA at 570-265-7753.

Visit www.sfiopa.org for the most current training schedule. Programs may be added or cancelled at any time. For additional information, please contact PA SFI® at: (570) 731-4269, (888) 734-9366 (toll free), pasfi@sfiopa.org

The Sustainable Forestry Initiative®, SFI®, and the SFI® Implementation Committee Logo are registered trademarks of SFI, Inc.



Pennsylvania Sustainable Forestry Initiative®

2011 Course Registration Form

- Registration Fees are **non-refundable** after the course registration deadline if the course is held and you do not attend.
- Courses may be cancelled if a minimum number of students are not registered by the registration deadline.
- For a full description of the PA SFI® Training Policies, please visit www.sfiopfpa.org or contact the PA SFI® office.

((Please Print Clearly))

((One Course Participant Per Form))

Attendee	Course Date	Course Name	Course Location	Cost
Name: (Full First, M.I., Last)				
Home Mailing Address:				
Home Phone: () _____ - _____ Email:				
Mail to: (Make checks payable to "PA SFI SIC") Pennsylvania SFI®, State Implementation Committee 914 W. Lockhart Street Sayre, PA 18840 (570) 731-4269 (office/fax) or (888) 734-9366 (toll free) Email: pasfi@sfiopfpa.org Web: www.sfiopfpa.org			Total Amount Enclosed:	

2011 Block 2 Course Descriptions

Core Training – Required to receive a PA SFI® Training Card. All 3 requirements must be completed within 2 years.

The core level courses are intended to provide a basic level of knowledge from which to expand an individual's professional development through continuing education.

- **Logging Safety (8 hours)** - The focus of this course is on recognizing and negating hazards that timber harvesting operations encounter daily. It is comprised of four modules: chainsaw safety, equipment safety, truck safety and an overview of OSHA regulations applicable to logging.
- **Environmental Logging (8 hours)** - The focus of this course is on the Erosion & Sediment Pollution Control Plan required by Chapter 102, understanding Pennsylvania's Clean Streams Laws, permits a logger may need when working near streams and wetlands, Best Management Practices (BMPs), and the importance of harvesting aesthetics, job layout, and planning.
- **First Aid/CPR (4 hours)** - The focus of this program is on First Aid and Adult CPR training that meets OSHA Logging requirements and American Red Cross (or equivalent) certification. Training can also be taken locally through the Red Cross, EMS, Hospital, etc.

Continuing Education (CE) Courses – One(1) year of CE credit is given for each four(4) hours of training. CE credit awarded (Training Card Expiration Date) is limited to three(3) years from current calendar year. CE credit will not be awarded for taking the same class more than once in a five(5) year period.

Continuing Education courses are intended to give training in specific subject areas and provide for an individual's professional development.

- **Introduction to Forest Management (8 hours)** - An introduction to forest ecology & silviculture, the role loggers play in forest management, and how their actions affect the forests they work in.
- **Business Management for Timber Harvesters (8 hours)** - Profitability of logging businesses is one key to implementing sustainable practices. Participants are introduced to the preparation of business plans, documents used for financial analysis, key people, sources of assistance, employee management and other components of running a successful business. Exercises include some skills needed to build a basic business plan, and complete a balance sheet, an enterprise budget, and a production plan.
- **Game of Logging (8 hours each Level)** - These courses cover chainsaw safety and safe/efficient harvesting techniques. **Level 1** focuses on Personal Protective Equipment, 5-point saw safety check, 5 parts of the cutting tooth, 4 reactive forces, plunge cutting, and directional tree felling. **Level 2** focuses on saw maintenance, chain sharpening techniques, releasing spring poles safely, and directional tree felling. **Level 3** focuses on directional felling trees with heavy side-lean and back-lean through the use of wedges and safe/productive limbing and bucking. **Level 4** focuses on dealing with hung trees, directional felling of hazardous trees, and efficient joy layout. Levels must be completed consecutively.
- **Hardwood Log Bucking (8 hours)** – This program is designed to integrate field, classroom and computer simulation techniques to teach better log bucking decisions. The goal is to increase the value and quality of hardwood logs by improving the log bucking skills of loggers and yard workers.
- **Estimating Standing Timber Volume (8 hours)** - This course was developed by the Northeast Loggers Association (NELA). The basics of sampling and tree measurement are introduced. Information is presented on determining percent merchantability, how to collect data from variable plots, and how to calculate merchantable volumes from the data that has been collected.
- **Planning & Analysis in Timber Harvesting (8 hours)** - Planning & Analysis in Timber Harvesting (PATH) is a new spreadsheet utility created by Northeast Forests, LLC. PATH is intended to help loggers benchmark their costs and compare cost structures of alternative mixes of equipment.
- **Job Layout and Profitable Skidding (8 hours)** - Finding ways to realize the greatest efficiency in your operations is paramount to controlling costs. This class is conducted on an actual job site to demonstrate the most efficient and effective ways to layout the timber harvest so time and effort will not be wasted.
- **GPS For Timber Harvesters (8 hours)** - Participants learn the fundamentals of the Global Positioning System (GPS) and its application to forest management. This course teaches how an inexpensive, recreational GPS unit and a personal computer can be used to determine tract acreage and boundary length, skid trail/haul road layout, distance and grade, mapping special features, and navigating tracts in unfamiliar areas.
- **Boundary Lines, Maps, & Deeds (4 hours)** - This class covers the fundamentals of locating boundary lines on the ground using a map and compass and how to make maps from deeds using paper, Google Earth and other mapping software.
- **2011 CE Update (4 hours)** - The 4-hour CE Update course is developed on an annual basis and covers several topics of current interest. The 2011 course includes the following subject areas, PA SFI® Training Policy, Harvesting Practices Webinar, FRA OSHA Logging Safety, Power Line Safety for Loggers, Skidder Bridge Construction & Installation Video, Engaging in the Political Process, Logger Survey & Discussion, and Open Time for Discussion of Local Issues.

The Sustainable Forestry Initiative®, SFI®, and the SFI® Implementation Committee Logo are registered trademarks of SFI, Inc.

Current PA SFI® Cardholders
(8/23/2011) (Last Name, First Name, MI,
Card Expiration Year, Total Training Hours)

The Pennsylvania Sustainable Forestry Initiative® State Implementation Committee

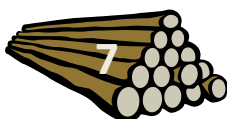
2011 Summer Newsletter, Issue #28

Knecht, Jr. Ed	2012 44	Merryman Erick	2011 32	Redell III John	T 2011 68	Snyder Kevin	A 2011 44	Wendt Brad	2013 48
Kniseley Dean	2012 28	Metzler Alan	J 2015 66	Redmond Michael	2011 24	Snyder Sr. Roy	A 2011 20	Werner Edward	2014 48
Knouse Gerald	2012 36	Metzler Lucas	2012 28	Reining Paul	2014 84	Snyder, Jr. James	2013 52	Westover Ronald	A 2011 44
Kocjancic Edward Scott	2012 52	Miles Shane	R 2013 36	Renninger Randy	2011 32	Sorg Jedidiah	R 2012 76	Wettlaufer Brian	2011 72
Kocjancic Joseph	2013 60	Miller Albert	L 2011 28	Renninger Travis	2011 32	Sorg Richard	T 2012 76	Wettlaufer Daniel	2011 72
Kocjancic Rudy	2011 52	Miller Andrew	E 2011 28	Renninger Wade	2011 32	Sowles Michael	2011 32	Wettlaufer Jeff	2013 48
Kocjancic, Jr. John	2012 28	Miller Curlee	2014 44	Reynolds Cody	J 2012 28	Spaich Kenneth	2011 64	Wettlaufer III George	2011 52
Konwinski Ed	2020 68	Miller Randy	E 2012 28	Richardson Robert	2013 40	Sparks Todd	2016 82	Whelpley Andy	2012 40
Kordes Richard	2014 84	Miller Scott	M 2011 24	Richart Shane	2011 28	Sperry Frank	2011 20	Whelpley James	2011 24
Kovalick Donald	T 2011 64	Millington Ronald	L 2012 50	Ridall Mark	2015 80	Spigelmyer Andy	D 2011 44	Whitehill Mike	2012 36
Kowalczyk Allan	2014 74	Mitchell Bob	2012 28	Riley Harry	2011 68	Spigelmyer Todd	2012 44	Whitsel Christopher	A 2013 48
Krause Bill	2011 36	Mitchell Terry	2012 32	Riley Paul	2011 68	Stackhouse Dale	L 2012 32	Whitsel Jonathan	W 2011 56
Krise Ronald	2011 24	Moats Roger	2012 32	Roberts Kenneth	2012 72	Stanford Rocky	2012 36	Widmickiewicz Jan	2015 52
Krise Russell	2011 24	Mohn Roland	2012 60	Robertson Stuart	M 2013 44	Stark Larry	2013 60	Wiggins Barrett	2014 78
Krug Alan	2013 36	Monks Todd	M 2012 36	Robinson Richard	N 2011 36	Staub Thomas	E 2012 28	Williams John	A 2013 60
Krug Ed	2012 24	Monn Rodney	E 2011 60	Roche Michael	R 2012 36	Steyer Ron	2011 36	Williams Paul	2011 60
Krug Jeffrey	A 2011 36	Moore David	2011 20	Rogers Boyd	M 2013 28	Stiber Brian	2012 48	Wilson Daniel	J 2012 20
Krumenacker David	G 2011 64	Moore Jessica	L 2012 20	Romig Carlo	P 2011 24	Stiles Justin	2012 36	Wiltrout Henry	R 2011 70
Krumenacker Mark	J 2013 72	Morley Tim	2014 36	Rosenberry Dennis	2015 56	Stoltzfus Mast	P 2013 44	Winter Larry	2012 48
Krywyy Fred	2011 32	Morgan Dave	2011 40	Rosenberry Gary	T 2012 40	Stone Louie	J 2016 82	Wodrig Dane	M 2013 56
Kuntz Eric	J 2013 32	Morgan Doug	2014 72	Rosenberry Micah	2014 40	Stout Kevin	R 2012 88	Wodrig, Jr. Harold	2011 32
Kurtzman Scott	J 2014 76	Morgan Eileen	2014 40	Rosenberry Troy	A 2016 60	Stout Kevin	C 2011 20	Wolbert Kenneth	J 2011 68
Kustenbauder Jim	2011 44	Morgan William	R 2014 72	Ross Jr. Lawrence	2011 20	Strange Jack	C 2011 60	Wolf Daniel	F 2011 60
LaBrozzi Richard	2016 76	Morgan Sr. Gary	C 2012 24	Rossman Gary	T 2015 90	Striner Bruce	R 2011 32	Wolf Michael	T 2012 62
Lantz Sam	2014 52	Mudery Joseph	2012 28	Roth Timothy	E 2012 48	Striner Ralph	2011 32	Wolf Kenneth	L 2011 56
Lapp Mark	2012 76	Mulkin Kerry	2012 46	Rotz Jody	M 2012 56	Summers Theodore	J 2012 64	Wray Timothy	L 2011 28
Larson Mark	2013 32	Murdoch John	2012 28	Roupp Wade	2012 36	Suppa II Dominic	A 2012 28	Wright Dale	L 2012 40
Larson Stephen	K 2013 78	Myers Jim	2011 36	Route Christopher	2013 74	Swanson Perry	2013 60	Wright Ronald	E 2011 40
Laslow Gary	2012 40	Myers, Jr. Dave	2013 44	Route Jeremy	2013 32	Swanson Terry	2013 64	Yasurek Mike	2014 52
Latschar John	R 2014 32	Narehood Tom	2011 36	Roy Lucas	2011 20	Swarey Jacob	L 2011 24	Yatsonsky Eugene	W 2016 48
Laughman Ralph	2012 68	Neal Paul	2011 48	Royer Terry	2011 32	Swarey Jonathan	L 2014 48	Yatsonsky Jesse	2012 18
Leach James	C 2014 48	Neal Travis	M 2012 20	Sanders Steve	2012 24	Swartzentruber Clayton	2011 28	Yilek John	W 2012 36
Lee Doug	2011 64	Nelson David	A 2011 56	Sarver Daniel	2012 64	Sweet Todd	2014 68	Yilek Joseph	2011 32
Lejedal Curt	2011 66	Nichols Jeffrey	S 2012 76	Savitts Luke	2014 40	Swope, Jr. Willis	F 2011 64	Yoder David	R 2011 28
Lenker Josh	J 2013 52	Niedzwiecki Leo	R 2014 44	Savitz James	2018 56	Taylor Dave	G 2014 88	Yoder Jonathan	D 2011 24
Levassasseur John	2013 72	Nipple Tracy	2012 44	Sayler Benjamin	2011 28	Taylor H. Michael	2011 36	Yoder Samuel	C 2012 48
Lewis David	2012 80	Noll Paul	E 2011 52	Schwartz Terry	2014 92	Taylor Henry	L 2011 36	Yoder Sylvanus	E 2012 32
Libby Kevin	C 2012 72	Norris Todd	2011 32	Selfridge Mark	J 2011 64	Taylor Mark	A 2012 28	Zaborowski John	C 2012 72
Liegey Allen	F 2013 60	Northcraft Ronnie	2012 76	Shadle Curtis	F 2014 76	Teats, Jr. Bruce	A 2011 36	Zehr Joe	2011 64
Likens Shawn	2012 36	Obenreder Kevin	F 2014 36	Shaffer Gary	L 2013 32	Tegano Adam	J 2011 44	Zendt Ryan	2013 32
Lippert Darren	2012 48	Olsson Lars	E 2015 56	Shaffer Nick	2012 32	Temple Robert	G 2016 52	Zimmerman Charles	2012 36
Lister Shane	A 2013 52	Olver Craig	A 2024 #	Shaffer Paul	2015 72	Thompson Jeffrey	W 2012 72	Zimmerman Scott	W 2014 80
Lorenzo Jason	2011 72	Painter Michael	2012 28	Shaffer Randy	2013 56	Thompson Leonard	2012 36	Zimmerman Stanley	M 2011 60
Losey Richard	2011 28	Parker Nick	2015 48	Shaffer Rick	E 2012 64	Tomak Wayne	2013 40	Zuraski Allen	2011 56
Luchs Rod	2011 64	Parker Stephen	M 2013 36	Sheaffer Jason	G 2013 40	Toombs Clark	2013 28	Zwald Paul	E 2011 68
Luchs Thomas	2012 64	Paros Ken	2011 44	Sheaffer John	E 2011 40	Tripodi Richard	2012 32		
Luchs, Jr. John	2011 64	Parsells Fay	W 2012 40	Sheaffer Mark	2011 40	Troyer Aden	L 2011 20		
Lundeen Ryan	2012 32	Paulhamus David	I 2011 76	Sheetz Brian	2013 76	Trumbull Michael	L 2014 36		
Lyon William	2012 68	Pavlekovsky Thomas	2011 24	Sharren Patrick	D 2015 84	Trumpie Robert	2012 40		
Lytle Dave	2011 60	Payne Dennis	2011 36	Sherwood Carroll	B 2012 28	Twoey Travis	2015 48		
Maines Mark	D 2013 80	Payne Donald	2011 44	Sherwood F. Russell	2011 52	Urmann, Jr. John	2011 48		
Mann William	H 2011 36	Peachey Benjamin	K 2012 40	Shields Robert	G 2011 68	Van Cise Matthew	2011 66		
Marolla Patrick	2014 36	Peachey Daniel	S 2013 32	Shields Thomas	P 2011 64	Van Meter Douglas	2011 28		
Marshall Brian	2011 24	Peachey Daryl	2011 40	Shoemaker Michael	D 2013 44	Van Treese Jr. Harold	W 2012 28		
Martin Jason	H 2011 32	Peachey Jacob	D 2012 44	Shoemaker Tim	2014 44	Vermilya Ronnie	2011 24		
Martin Ramon	2012 32	Peachey Jacob	W 2012 32	Shope Brett	W 2011 56	Vollmer Adam	2011 28		
Mattern, Jr. Edward	2014 48	Peachey Joseph	2012 56	Shreve Quinn	E 2012 36	Wahlberg Dave	2011 60		
Matteson Bret	2011 32	Peachey Matthew	2012 20	Shugarts Darrin	2013 44	Waite John	G 2011 36		
McAlla Brian	2016 44	Peachey, Jr. David	J 2013 32	Shuler James	2012 56	Walls Brian	2012 40		
McCall Mark	E 2011 48	Pearson James	L 2011 52	Shultz Gregory	2012 76	Walter Keith	E 2012 72		
McCanna Matthew	T 2012 58	Peterson Dan	2013 40	Shultz, Jr. Gregory	2011 68	Walter Wesley	K 2011 68		
McCanna Shawn	2015 70	Piper Merle	2012 28	Shutt Gary	2012 36	Walters Allen	2011 24		
McClure Donald Eric	2012 28	Platt David	2015 64	Shutt Leo	2011 32	Walters Brad	2011 24		
McConnell Cory	E 2014 52	Postelwaite William	2014 44	Sickler Mark	2012 60	Waskiewicz Malcolm	D 2013 66		
McConnell Mike	2012 36	Potter Mark	C 2015 60	Sienko David	A 2012 70	Waters Chris	2011 28		
McCoy Lee	2012 60	Poust, Jr. Charles	L 2011 68	Sluga Jim	2014 54	Watson, Jr. Jim	2013 90		
McCullough Robert	H 2012 36	Powell Richard E. C.	2013 76	Smail Timothy	C 2014 44	Watt Todd	2011 36		
McEntire Mike	A 2012 68	Probst Shannon	2013 56	Smith Chris	2012 36	Watters Randy	C 2014 68		
McPherson Arlen	2012 36	Proctor Gregory	D 2013 36	Smith Daniel	L 2013 32	Weaver Beryl	N 2011 48		
McPherson Robert	2011 32	Quarles David	2011 68	Smith Garrett	2012 28	Weaver Nelson	2013 44		
Mead Jayme	2011 32	Rabenstein George	E 2011 52	Smith Henry	F 2012 40	Webber-Wolfe Jo Ann	A 2012 60		
Meeker Jr. Bruce	L 2011 32	Ramsey Delmas	2012 40	Smith Todd	2012 32	Webster Paul	M 2011 48		
Mekos Mark	2012 36	Rathbun Howard	S 2011 56	Smith, Jr. George	A 2012 36	Weisenstein Ronald	A 2011 68		
Melville Christopher	2012 44	Reasner Pierre	H 2014 44	Smoker Jack	L 2011 32	Wells Charles	2012 20		
Melville Martin	2019 #	Reasner Pierron	P 2012 72	Snyder Craig	2012 28	Welsh Cory	J 2012 20		

Year-to-Date

Logger Training Results

- 34 Individuals Completed Core Training Requirements
- 347 Individuals Attended Training
- 498 Training Units Recorded
- 41 Training Programs Conducted/ Awarded CE Credit
- 645 Individuals Hold Current PA SFI® Training Cards (As of 8/23/11)



The Sustainable Forestry Initiative®, SFI®, and State Implementation Logo are registered service marks of SFI, Inc.



PA SFI® SIC
914 W Lockhart Street
Sayre, Pennsylvania 18840

The SFI® Program is a service of SFI, Inc.

The Pennsylvania Sustainable Forestry Initiative® State Implementation Committee

2011 Summer Newsletter, Issue #28

Thousand Cankers Black Walnut Disease Found in PA – State Orders Quarantine

The Pennsylvania Department of Agriculture has announced that “Thousand Cankers Black Walnut Disease” has been found in Plumstead Township, Bucks County, PA. State officials believe that the disease has been at this location for as many as six years and that it was originally brought into the state through a shipment of infected black walnut lumber from the western United States.

This is the first discovery of Thousand Cankers Black Walnut Disease in Pennsylvania. State agencies have been conducting surveys for the disease for some time. They will now be conducting more focused surveys in areas surrounding Bucks County.

The quarantine prohibits the movement from the county of black walnut trees, logs and green lumber. The quarantine also covers all hardwood firewood and all hardwood chips and mulch. Compliance agreements will be available for the movement outside the county of kiln dried walnut lumber that has no bark.

Paul Lyskava, PFPA



The Sustainable Forestry Initiative®, SFI®, and State Implementation Logo
are registered service marks of SFI, Inc.